



DIGITAL ELCB

Product code : REDPEL102

AN ISO 9001 : 2015 Company

Features:

- High voltage prevention, Set from 250V to 300V, with auto restart.
- Low voltage prevention, Set from 140V to 190V, with auto restart.
- Earth leakage set from 1 to 50 mA.
- Over load set from 1A to 32Amp.
- Bypass facility for emergency only.
- Continuous display of Volt, Load and Leakage.
- Relay on indication.
- High load capacity up to 32 Amp with power relay.

Application:

The Digital ELCB is disconnect the supply of home or office when detecting the voltage fluctuation, over load and leakage limit cross.

It is used to protect home safe from leakage, over load and voltage variation.

Device controlling mode:

- **Auto** : In auto condition of ELCB the green led of relay indication is on or off continuous without blinking according to relay status. In this mode unit provide all voltage, leakage and load protection.
- **Bypass** : In bypass condition of ELCB the green led is blinking and unit can not protect any parameter.
- Press Bypass button for switch from auto to bypass or bypass to auto condition.

Precautions:

- Keep device away from direct water fall or rain.
- keep safe from direct sun light.
- make screw tight properly.

PRODUCT SPECIFICATION

Product code REDPEL102

Supply Characteristics

Supply Voltage 240VAC, +-20%

Supply Frequency 47-63 Hz.

Power consumption 3VA

DEVICE Characteristics

High volt protection Set from 250 to 300V, and restart auto after voltage below 10 V lower from set point.

Low volt protection Set from 140 to 190V, and restart auto after voltage above 10 V higher from set point

Leakage current Set from 1 to 50 mA

Over load Set from 1 to 32 Amp

Led Indication Led 1 : red : For voltage

Led 2 : red : For leakage

Led 3 : red : For Load

Led 4 : Green : For relay status / for blink bypass

Output mode Relay On / Off

Contact Ratings 2 N/O, 32 Amp @ 250VAC,

Electrical life 10,00,000 Operation

Mechanical life 10,00,000 Operation

Operating Temperature -10°C to +60°C

Storage Temperature -10°C to +70°C

Weight Approx. 450gm

Relative Humidity 5 to 15% RH (non condensing)

Mounting type Base mount

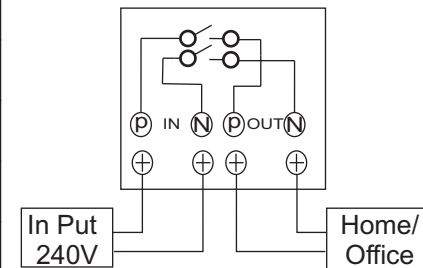
PROGRAMMING DETAIL

Press key	Display	Led status	Set parameter
Set	HV 280	●○○○	Press Up and down key to set High voltage
Set	LV 145	●○○○	Press Up and down key to set High voltage
Set	LEK 045	○●○○	Press Up and down key to set Leakage current
Set	OL 030	○○●○	Press Up and down key to set Over load
Set	Complete program and running display		

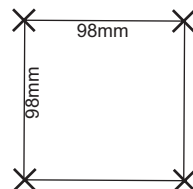
BYPASS SET

Press key	Led status	Set parameter
By Pass	○○○○	Last led blinking unit is Bypass condition
	○○○●	
By Pass	○○○●	Last led is stable unit is in working condition

CONNECTION DIAGRAM



DRILL DIAGRM



WIRE CONNECTED : 0.5 TO 4 MM²